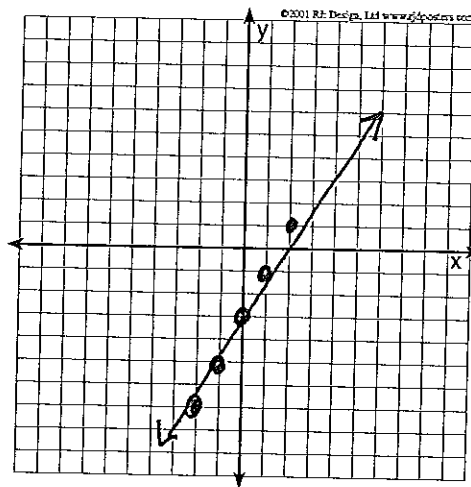


Extra Practice

Make a table of values, graph your table & then tell if the line has a pos, neg, undefined or zero slope.

$$y = 2x - 3$$

X		Y	(x,y)
0	$2(0)-3$ $0-3$	-3	(0,-3)
1	$2(1)-3$ $2-3$	-1	(1,-1)
-1	$2(-1)-3$ $-2-3$ -5	-5	(-1,-5)
2	$2(2)-3$ $4-3$	1	(2,1)
-2	$2(-2)-3$ $-4-3$	-7	(-2,-7)



Positive slope

Name _____