

Name: Answers

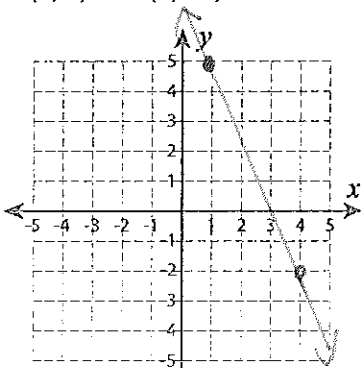
Score: _____

Find the Slope

Sheet 1

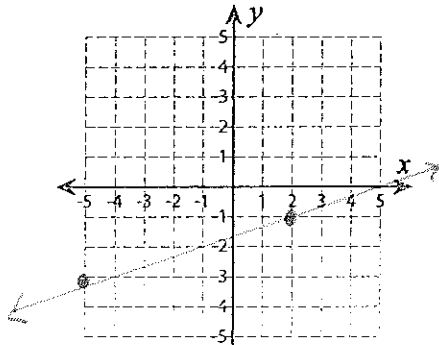
Graph a line through the given pair of points. Find the slope.

1) (1, 5) and (4, -2)



$$\text{Slope} = \frac{-2-5}{4-1} = \frac{-7}{3}$$

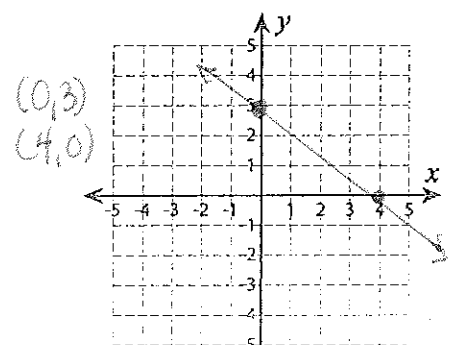
2) (2, -1) and (-5, -3)



$$\text{Slope} = \frac{-3-(-1)}{-5-2} = \frac{-2}{-7} = \frac{2}{7}$$

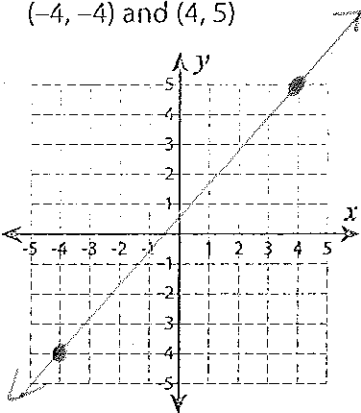
3) x-intercept=4, y-intercept=3

This just means crosses x axis at 4 & y at 3



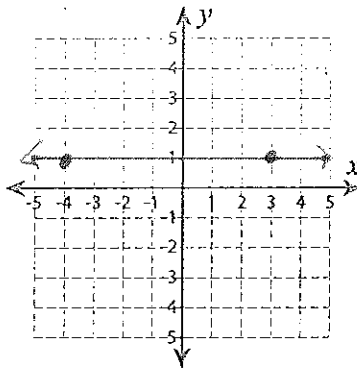
$$\text{Slope} = \frac{0-3}{4-0} = \frac{-3}{4}$$

4) (-4, -4) and (4, 5)



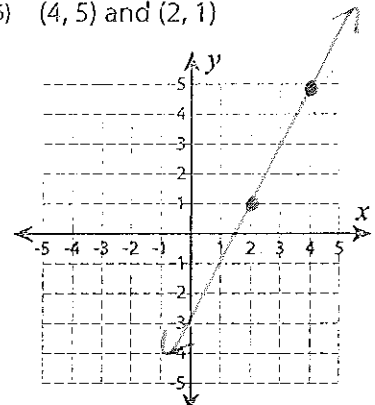
$$\text{Slope} = \frac{5-(-4)}{4-(-4)} = \frac{9}{8}$$

5) (3, 1) and (-4, 1)



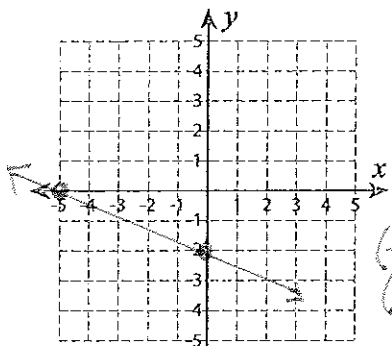
$$\text{Slope} = \text{zero } \boxed{0}$$

6) (4, 5) and (2, 1)



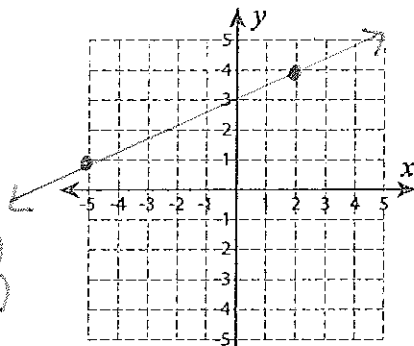
$$\text{Slope} = \frac{1-5}{2-4} = \frac{-4}{-2} = 2$$

7) x-intercept=-5, y-intercept=-2



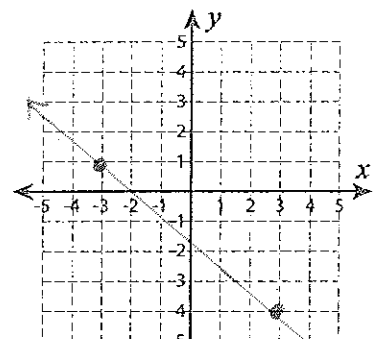
$$\frac{-2-0}{0-(-5)} = \frac{-2}{5}$$

8) (-5, 1) and (2, 4)



$$\frac{4-1}{2-(-5)} = \frac{3}{7}$$

9) (-3, 1) and (3, -4)



$$\frac{-4-1}{3-(-3)} = \frac{-5}{6}$$